



Architecture Diagrams

Routing Scenarios with AWS Direct Connect SiteLink



Routing Scenarios with AWS Direct Connect SiteLink: Architecture Diagrams

Copyright © 2024 Amazon Web Services, Inc. and/or its affiliates. All rights reserved.

Amazon's trademarks and trade dress may not be used in connection with any product or service that is not Amazon's, in any manner that is likely to cause confusion among customers, or in any manner that disparages or discredits Amazon. All other trademarks not owned by Amazon are the property of their respective owners, who may or may not be affiliated with, connected to, or sponsored by Amazon.

Table of Contents

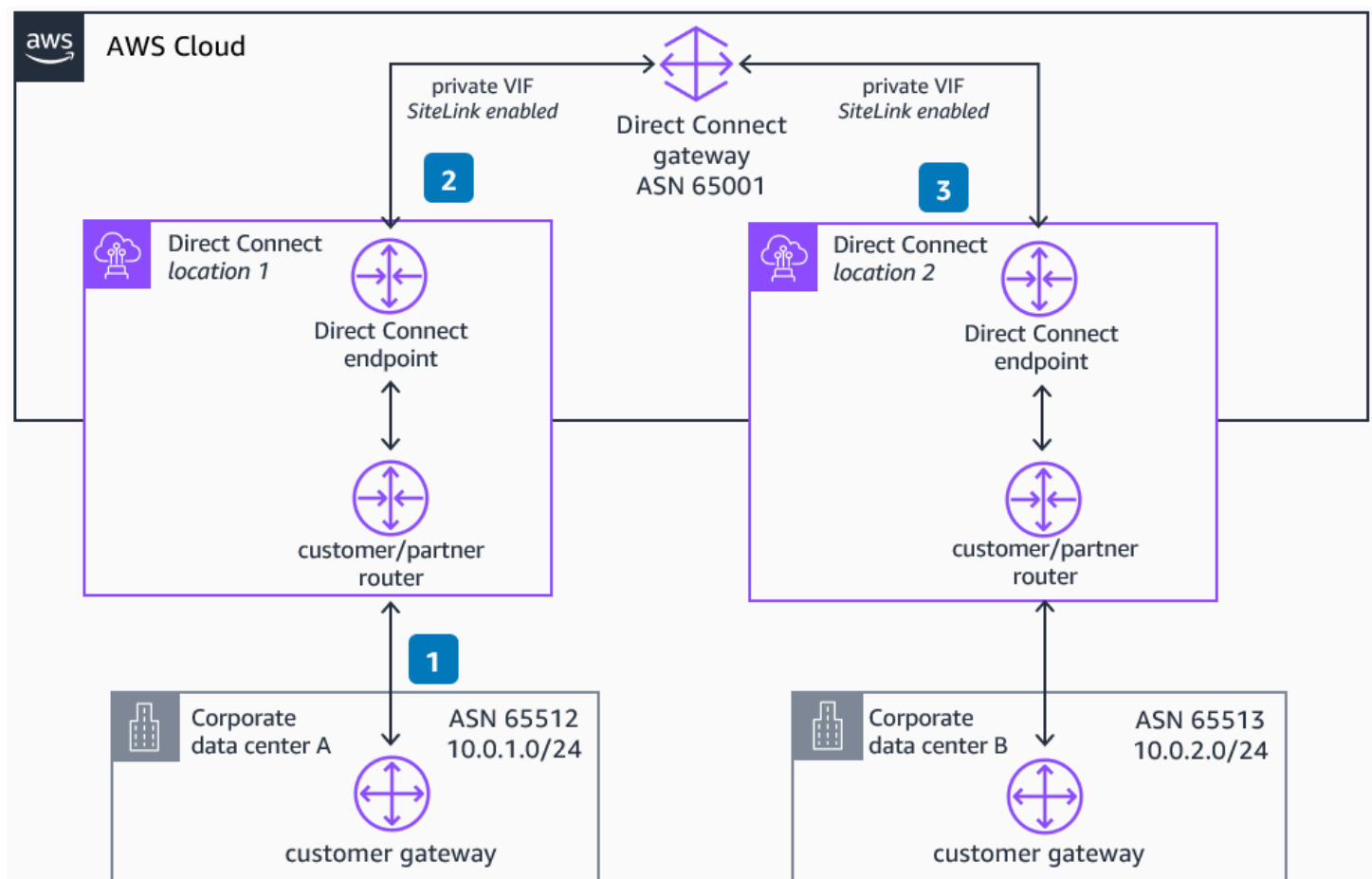
Home	i
Traffic Flow Between On-Premises Locations Diagram	1
Traffic Flow Between On-Premises Locations – Backup	2
Traffic Flow Between On-Premises Locations – Extension	4
Full Mesh Connectivity Between On-Premises Locations and AWS	5
Traffic Segmentation with Several AWS Direct Connect Gateways	6
Download editable diagram	7
Create a free AWS account	7
Further reading	7
Contributors	7
Diagram history	8

Routing Scenarios with AWS Direct Connect SiteLink

Publication date: July 25, 2023 ([Diagram history](#))

Traffic Flow Between On-Premises Locations Diagram

With AWS Direct Connect SiteLink, route traffic between AWS Direct Connect locations through the AWS global network backbone without traversing any AWS Region. Associate your private or transit virtual interfaces (VIFs) to a common AWS Direct Connect gateway and enable SiteLink in those VIFs.



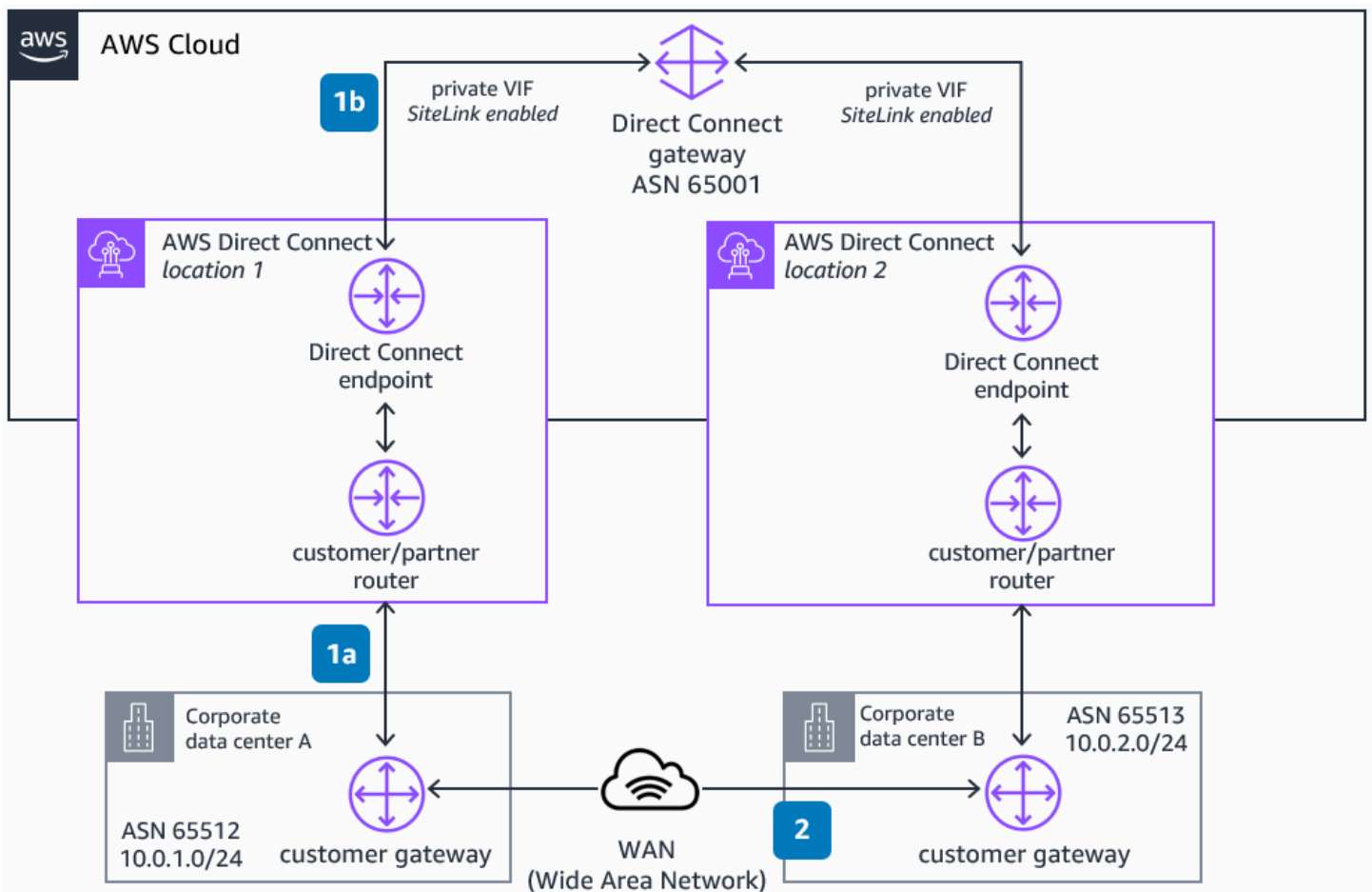
1. The customer gateway in corporate data center A advertises its CIDR block (10.0.1.0/24) to the **AWS Direct Connect** logical device (not shown in the diagram) when configuring the virtual interface.
2. Once the VIF is attached to the **AWS Direct Connect** gateway (DXGW), it announces the CIDR block to any resource associated with it (such as **Amazon Virtual Private Cloud** (Amazon VPC) or

- AWS Transit Gateway**). If SiteLink is enabled on this VIF, the CIDR block will also be announced to any other VIF that is attached to this **AWS Direct Connect** gateway and has SiteLink enabled.
3. The customer gateway in the corporate data center B configures its VIF and it is associated with the **AWS Direct Connect** gateway. It receives the 10.0.1.0/24 block with AS PATH 65001 65001¹ 65512. The block 10.0.2.0/24 will also be announced to corporate data center A through the gateway with AS PATH 65001 65001 65513. Now both locations will be able to route traffic between each other.

¹ When connecting two AWS Direct Connect connections to the same AWS device, you get +1 AS prepended (AWS Direct Connect gateway ASN) when using SiteLink. However, when these connections are in different sites, you get this ASN twice (+2 AS prepended) – one for each AWS router.

Traffic Flow Between On-Premises Locations – Backup

You can use AWS Direct Connect SiteLink as a backup path to your private network to route traffic between on-premises locations through the AWS global network backbone without traversing any AWS Region.

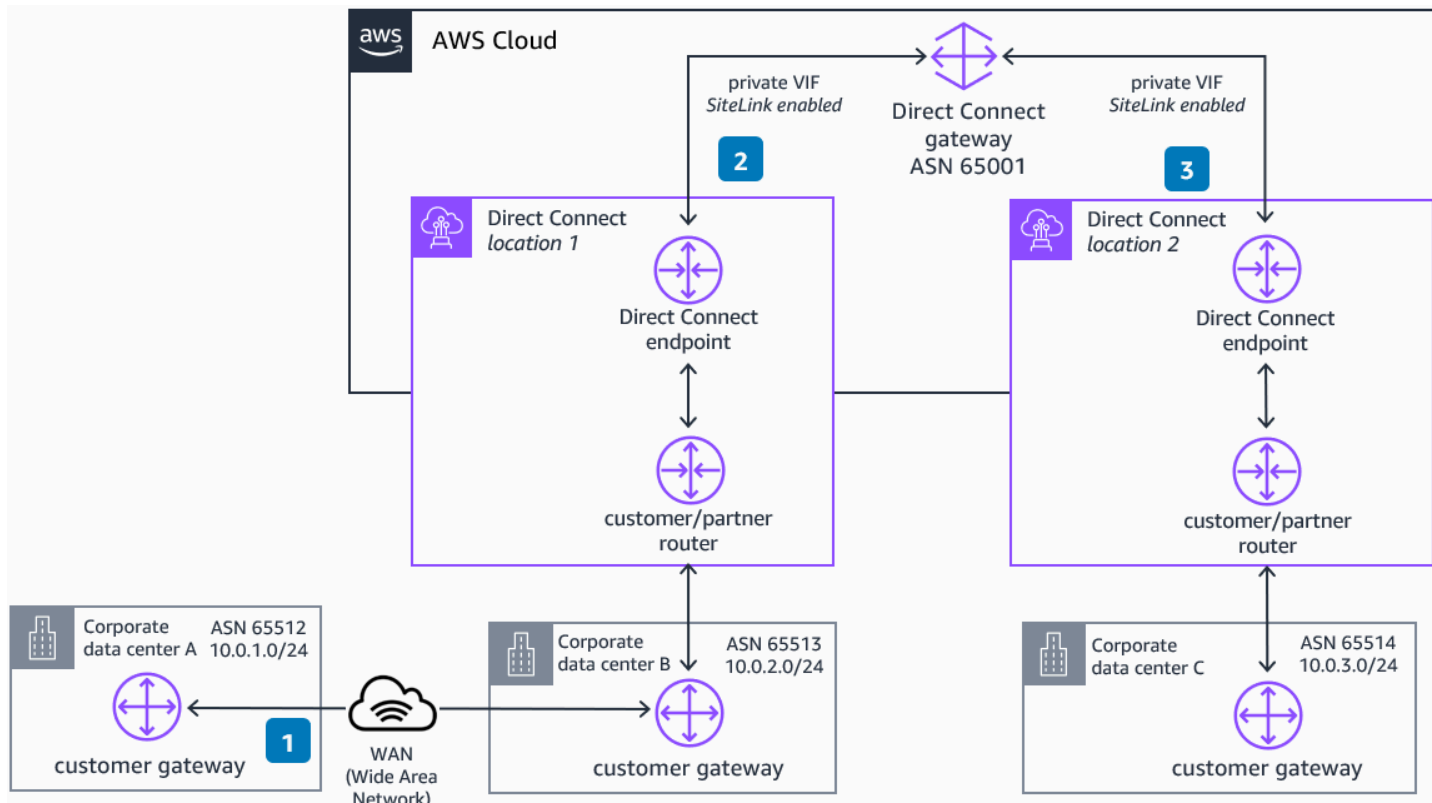


- 1. Preferred** - Customer data centers advertize their respective network CIDRs through a private network such as MPLS. The customer gateway in corporate data center A receives the CIDR block of corporate data center B with the AS PATH 65513.
- If SiteLink is enabled in both private or transit VIFs, however, the customer gateway in corporate data center A also receives the CIDR block of corporate data center B with the AS PATH 65001 65001 65513.
- In the case of an outage of the WAN network, traffic from corporate data center A to data center B is routed directly between **AWS Direct Connect** locations without traversing any AWS Region.

For more information about how to influence path preference using BGP, refer to [Creating active/passive BGP connections over AWS Direct Connect](#).

Traffic Flow Between On-Premises Locations – Extension

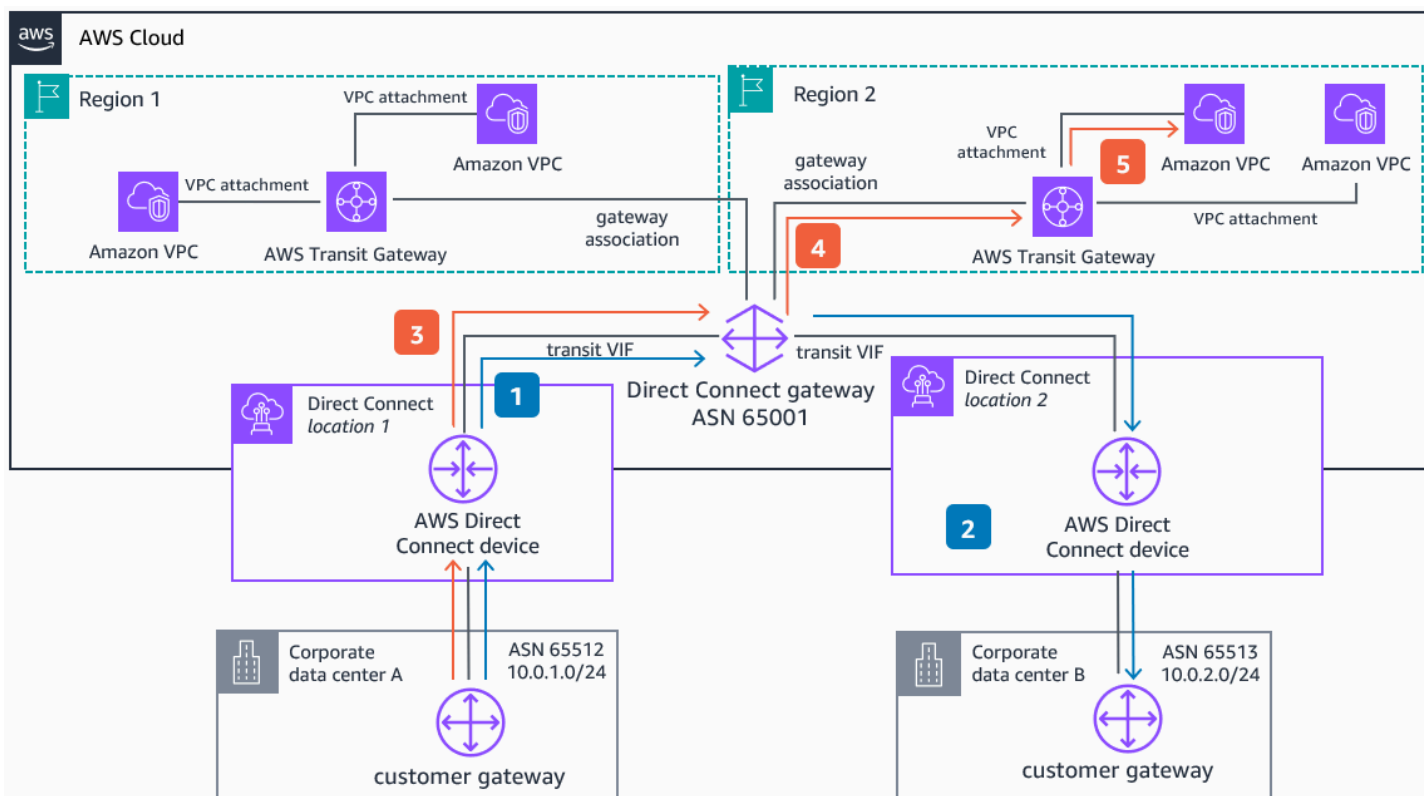
You can use AWS Direct Connect SiteLink as an extension of your private network to route traffic between on-premises locations using AWS global network backbone without traversing any AWS Region. Not all of your datacenters need to have a direct connection.



1. The customer gateway in corporate data center A receives the CIDR block of corporate data center C with the AS PATH 65513 65001 65514 from corporate data center B.
2. The customer gateway in data center B receives the CIDR block of corporate data center A with AS PATH 65512. Because SiteLink is enabled on the VIFs associated with customer gateways in data centers B and C, the customer gateway in data center C can receive the CIDR from data center A with AS Path 65001 65001 65513 65512.
3. Traffic between corporate data centers A and C is routed directly between **AWS Direct Connect** locations without traversing any AWS Region.

Full Mesh Connectivity Between On-Premises Locations and AWS

With a common AWS Direct Connect gateway, you can use the AWS backbone as the transit network to connect between on-premises and AWS resources worldwide. Enable SiteLink on your VIFs and attach them to a common AWS Direct Connect gateway, connected to your AWS resource (for example, AWS Transit Gateway or Amazon Virtual Private Cloud).

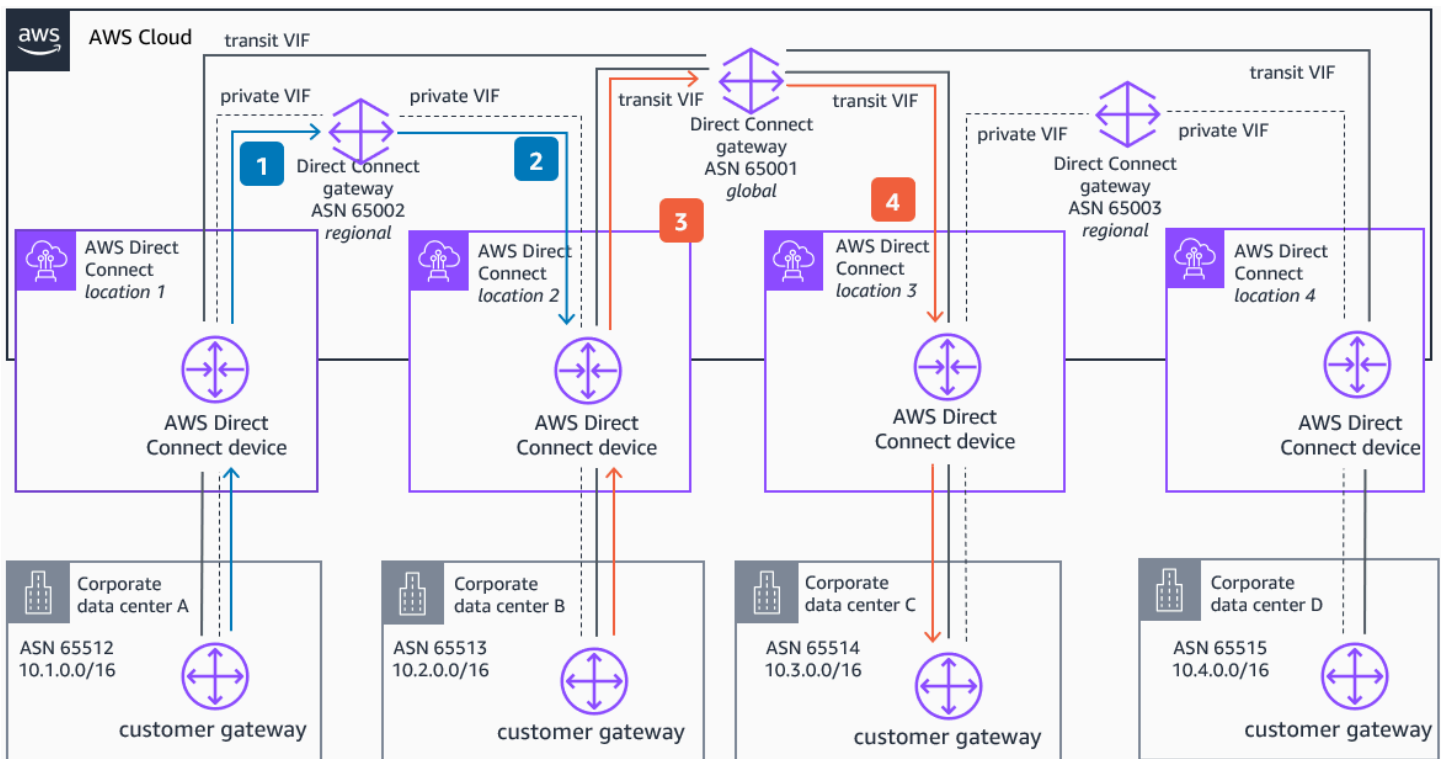


1. If SiteLink is enabled in both transit VIFs, the customer gateway in corporate data center A receives the CIDR block of corporate data center B with the AS PATH 65001 65001 65513.
2. Traffic from corporate data center A to data center B is routed directly between **AWS Direct Connect** locations without traversing any AWS Region.
3. The customer gateway in corporate data center A receives the CIDR blocks of the resources in AWS (Regions 1 and 2) with the AS PATH 65001 from the **AWS Direct Connect** gateway.
4. Traffic sent to AWS from corporate data center A arrives at the gateway, which routes it to the corresponding **AWS Transit Gateway** (in this case the one located in Region 2).

5. **Transit Gateway** in Region 2 routes the traffic to the corresponding **Amazon Virtual Private Cloud** (Amazon VPC) according to the **Transit Gateway** route table associated with the **AWS Direct Connect** gateway association.

Traffic Segmentation with Several AWS Direct Connect Gateways

You can take advantage of several AWS Direct Connect gateways and multiple VIFs to segment the traffic between your locations. Common use cases can be segmenting global and regional networks, or expanding your virtual routing and forwarding (VRFs). The configuration of multiple VIFs per connection is only possible with dedicated connections.



1. A private VIF is configured and attached to the regional **AWS Direct Connect** gateway with ASN 65002. To achieve segmentation with global traffic through the transit VIF, a more specific prefix (10.1.0.0/24) is announced. This prefix will be used for regional connectivity instead of global connectivity.
2. Likewise, a private VIF in corporate data center B is configured and attached to the gateway with ASN 65002. If both private VIFs (from data centers A and B) have SiteLink enabled, they will be able to communicate using the AWS backbone.

3. When corporate data center B needs to communicate with other locations globally, it will use the transit VIF attached to the gateway with ASN 65001. To not overlap BGP (Border Gateway Protocol) announcements, it uses a more specific route (10.2.2.0/24) through the transit VIF.
4. Other SiteLink enabled locations attached to the same gateway through the transit VIFs can communicate using the AWS backbone. Global connectivity is achieved using ASN 65001, and regional connectivity with ASNs 65002 and 65003.

Download editable diagram

To customize this reference architecture diagram based on your business needs, [download the ZIP file](#) which contains an editable PowerPoint.

Create a free AWS account

[Sign up now](#)

Sign up for an AWS account. New accounts include 12 months of [AWS Free Tier](#) access, including the use of Amazon EC2, Amazon S3, and Amazon DynamoDB.

Further reading

For additional information, refer to

- [AWS Architecture Icons](#)
- [AWS Architecture Center](#)
- [AWS Well-Architected](#)
- [Introducing AWS Direct Connect SiteLink](#)

Contributors

Contributors to this reference architecture diagram include:

- Pablo Sánchez Carmona, Specialist Solutions Architect, Networking, Amazon Web Services
- Ivo Pinto, Senior Solutions Architect, Amazon Web Services

Diagram history

To be notified about updates to this reference architecture diagram, subscribe to the RSS feed.

Change	Description	Date
Minor update	Update AS PATH prefixes.	July 24, 2023
Initial publication	Reference architecture diagram first published.	April 2, 2023

Note

To subscribe to RSS updates, you must have an RSS plugin enabled for the browser you are using.